

Mouse Anti-human complements C3, clone #: M68 Monoclonal Antibody

Catalog Number:	PT-mAb-M68
Quantity:	100ug
Concentration:	1mg/mL
Specificity:	Human
Immunogen:	Human Complement C3
Isotype:	IgG
Supplies As:	Protein A purified; 50% Glycerol
Storage:	-20 °C

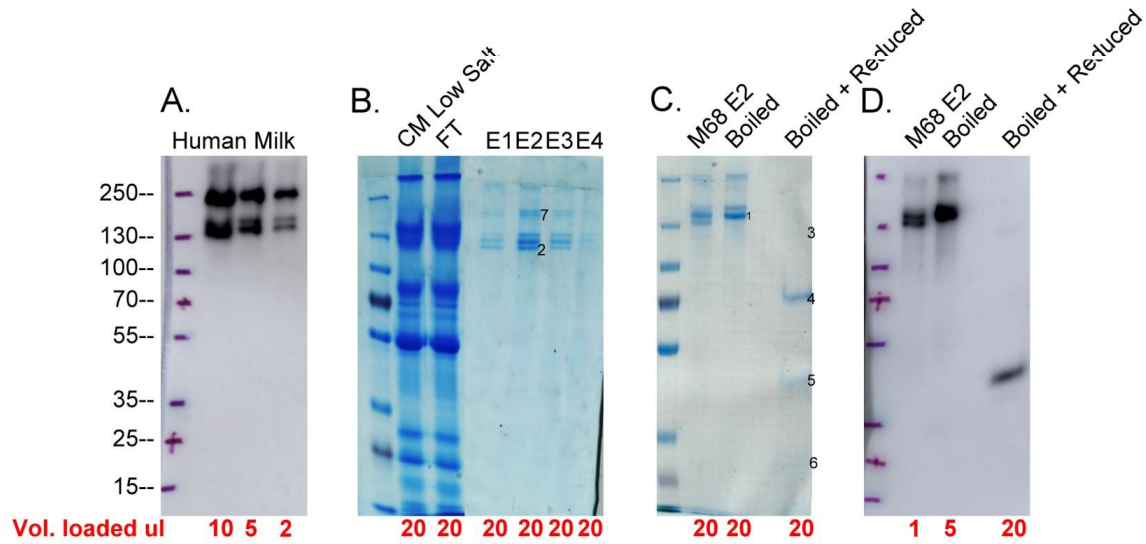
Applications and Suggested Dilutions*:

Western Blot: 2 µg/ml;

Immunohistochemistry: 2 µg/ml

*Specific dilutions and blocking conditions should be determined by the investigator.

Reference:



Complement C3 can be detected in human milk by western blot analysis under non-reducing non-boiled conditions using the **M68 mAb** as two groups of protein bands (A). The two groups of complement C3 proteins can be purified by the **M68 mAb** immunoaffinity chromatography from the partially purified milk fractions (B). The purified complement C3 can be dissociated into four protein bands under reducing and boiled condition (C). The epitope recognized by mAb M68 is on the 50-kDa fragment (D). The epitope recognized by the mAb **M68** is significantly destroyed by boiling and reducing treatment and requires much more proteins loaded for the detection. The protein band 1-7 as indicated are sliced out and subjected to MS/MS protein identification (by ProtTech Inc.), confirming these bands to be complement C3. The relative abundance of peptides matching to C3 is 97% for band 1, 98% for band 2, 75% for band 3, 98% for band 4, 91% for band 5, 45% for band 6, and 96% for band 7. For the best detection sensitivity, the samples should be treated **under non-boiled and non-reducing conditions**