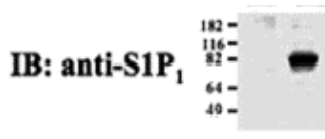


Anti-S1P₁ Monoclonal Antibody

Source: Escherichia coli-derived human S1P₁ full-length antigen was used to develop a murine monoclonal antibody using established procedures. Anti-S1P₁ monoclonal IgG was purified from hybridoma cell supernatants using protein A-Sepharose.

Clone: S1P₁.E49



Specificity: S1P₁ Monoclonal Antibody recognizes S1P₁ receptor (anti-sphingosine 1-phosphate receptor-1) expressed in cells.

Formulation: Each vial contains 100µg IgG 1mg/ml in PBS, pH 7.4 with 0.05% sodium azide and 50% glycerol. Frozen liquid.

Storage/Stability: Stable for one year at -20°C from date of shipment. For maximum recovery of product, centrifuge the original vial after thawing and prior to removing the cap. Aliquot to avoid repeated freezing and thawing. Aliquot will be stable at 4°C for 3 months.

Applications: Western Blot (1:1000), Immunoprecipitation and Immunostaining (1:200).

Research Use: For research use only, not for use in diagnostic procedures.

Reference: Oo, M.L., Thangada, S., Wu, M.T., Liu, C.H., Macdonald, T.L., Lynch, K.R., Lin, C.-Y., and Hla, T. (2007) Immunosuppressive and anti-angiogenic sphingosine 1-phosphate receptor-1 (S1P1) agonists induce ubiquitinylation and proteosomal degradation of the receptor. *J. Biol. Chem.* 282:9082-9089.