

Mouse Anti-human Clusterin, clone #: A06-15A3 Monoclonal Antibody

Catalog Number:	PT-mAb-A06-15A3
Quantity:	100ug
Concentration:	1mg/mL
Specificity:	Human
Immunogen:	Human Clusterin
Isotype:	IgG
Supplies As:	Protein A purified; 50% Glycerol
Storage:	-20 °C

Applications and Suggested Dilutions*:

Western Blot: 2 µg/ml;
Immunohistochemistry: 2 µg/ml

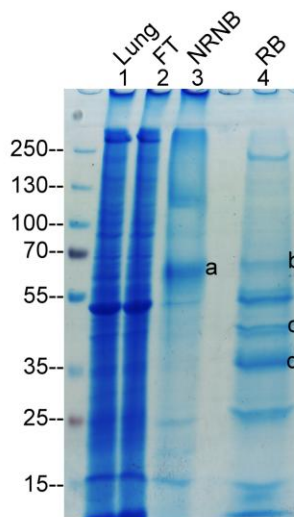
*Specific dilutions and blocking conditions should be determined by the investigator.

Reference:

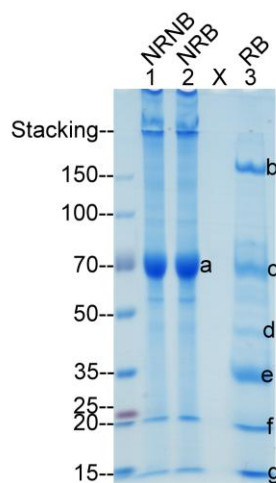
Clusterin, The mAb A06-15A3

B. Immunoaffinity Purification

From lung tissue lysate



From partially purified plasma proteins



Clusterin identified in the sliced protein bands

From lung tissue lysate

Protein Band Sliced	Protein Verified By MS/MS	Relative Abundance	UniProt Link
a	Clusterin	71.1%	P10909
b	Clusterin	37.7%	P10909
c	Clusterin	3%	P10909
d	Clusterin	41.3%	P10909

From partially purified plasma proteins

Protein Band Sliced	Protein Verified By MS/MS	Relative Abundance	UniProt Link
a	Clusterin	83.4%	P10909
b	Clusterin	1.7%	P10909
c	Clusterin	13.8%	P10909
d	Clusterin	3.2%	P10909
e	Clusterin	65.1%	P10909
f	Clusterin	0%	P10909
g	Clusterin	0%	P10909